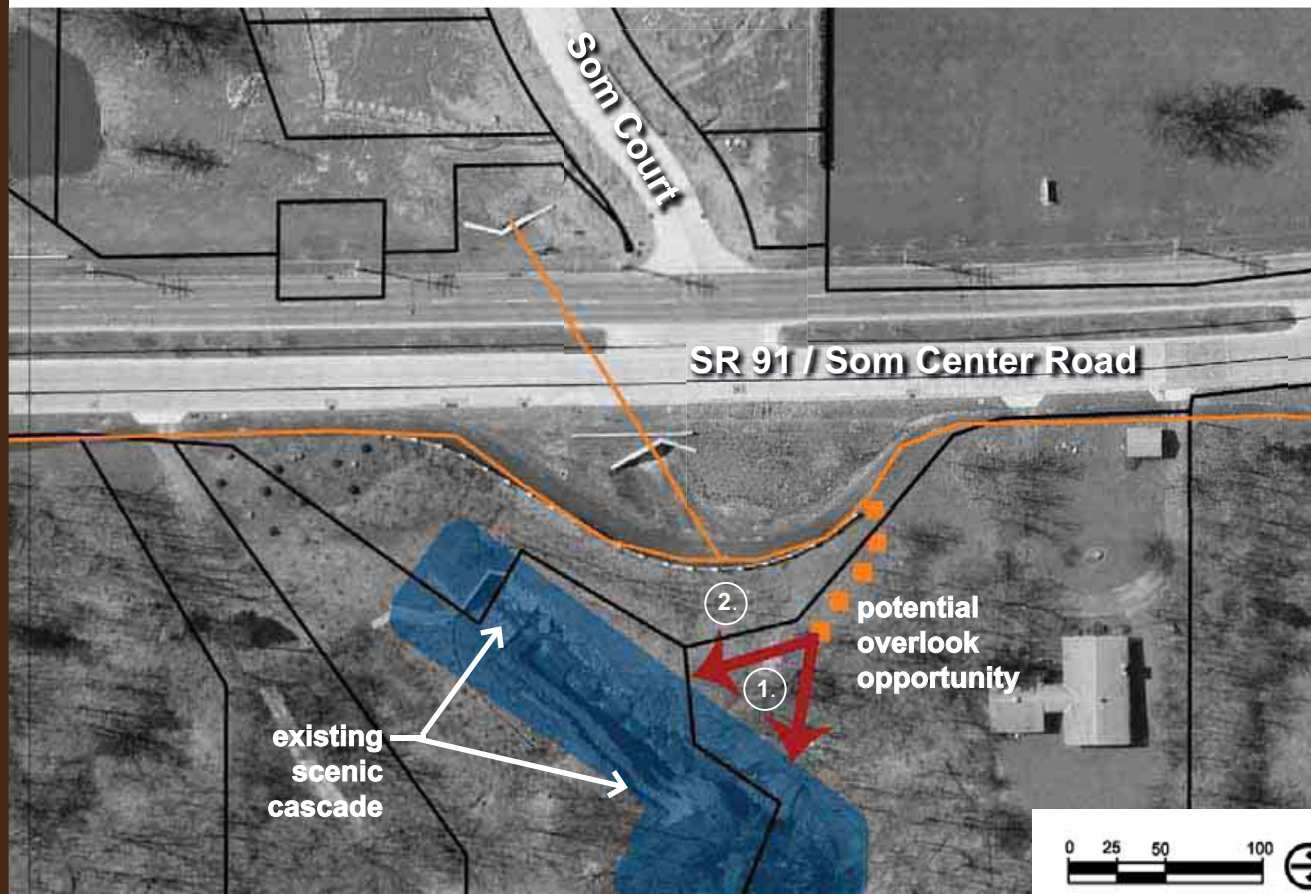


Opportunities and Constraints Detail: Cascade Overlook



1. Existing Slope - 1:1.5 undisturbed vegetated grade

2. Reconstructed Slope- 2:1 vegetated grade

Opportunities

- potential overlook opportunity location
- scenic views at cascade & stream
- existing high point
- accessible location

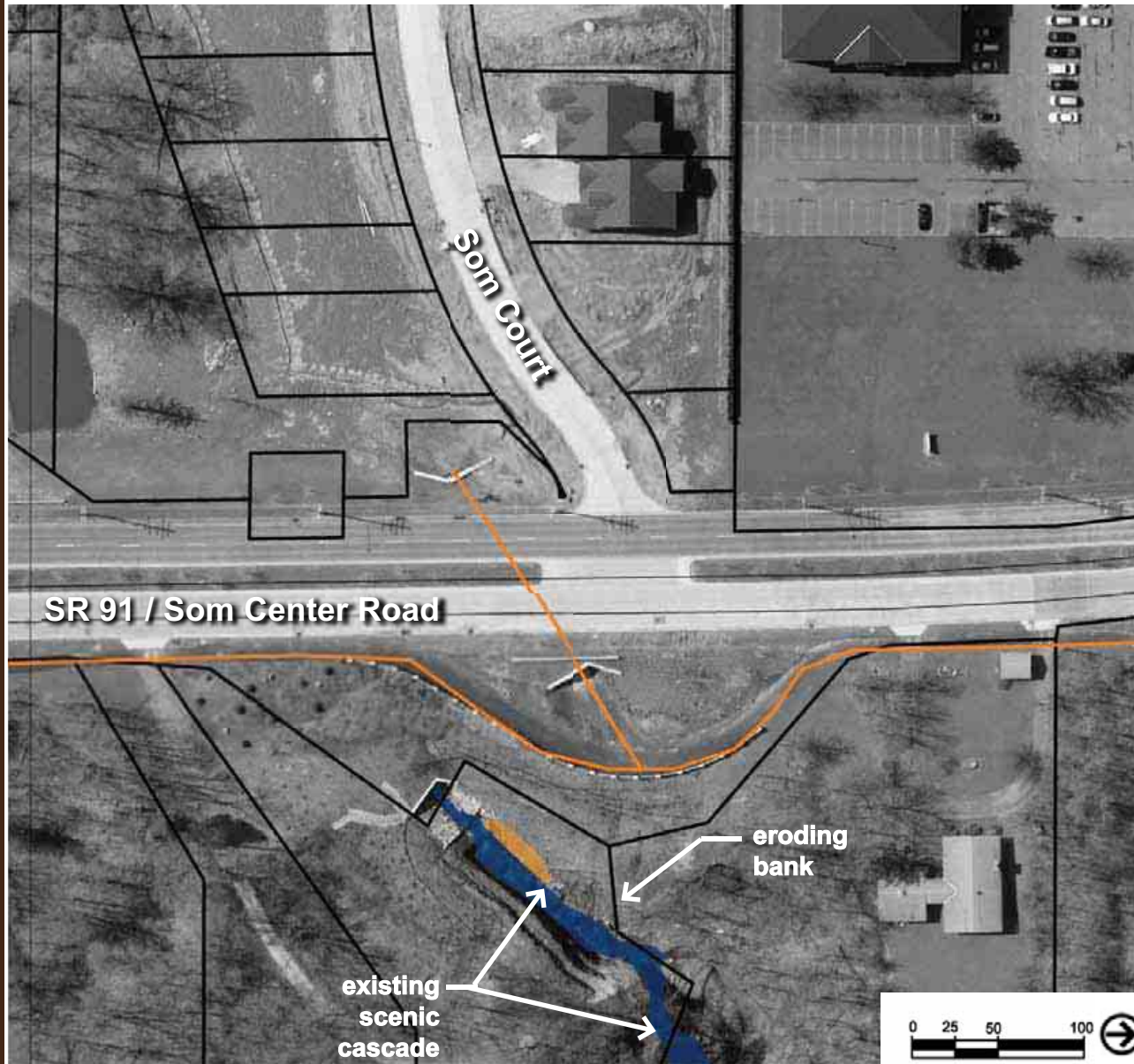
Constraints

- constructability may be difficult



The scenic cascade is not visible from the bike trail

Opportunities and Constraints Detail: Cascade Erosion



Opportunities

- remove feature sediment deposits
- stabilize the bank

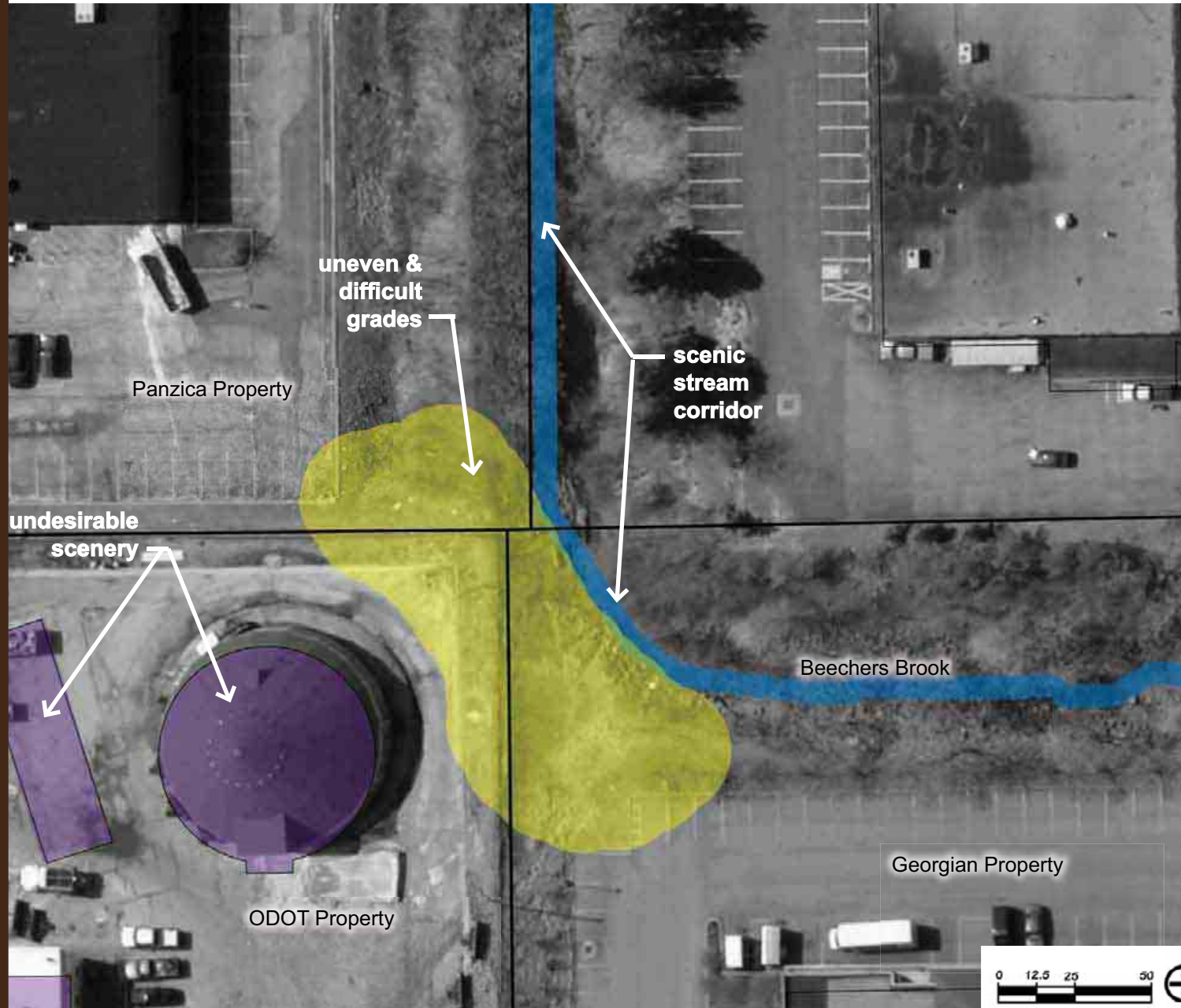
Constraints

- access difficult due to existing slope
- stream flow may make restoration difficult



Potential view of the cascade from an overlook

Opportunities and Constraints Detail: ODOT Property



Opportunities

- stream corridor provides opportunity for a trail in a natural setting
- connected to many surrounding users

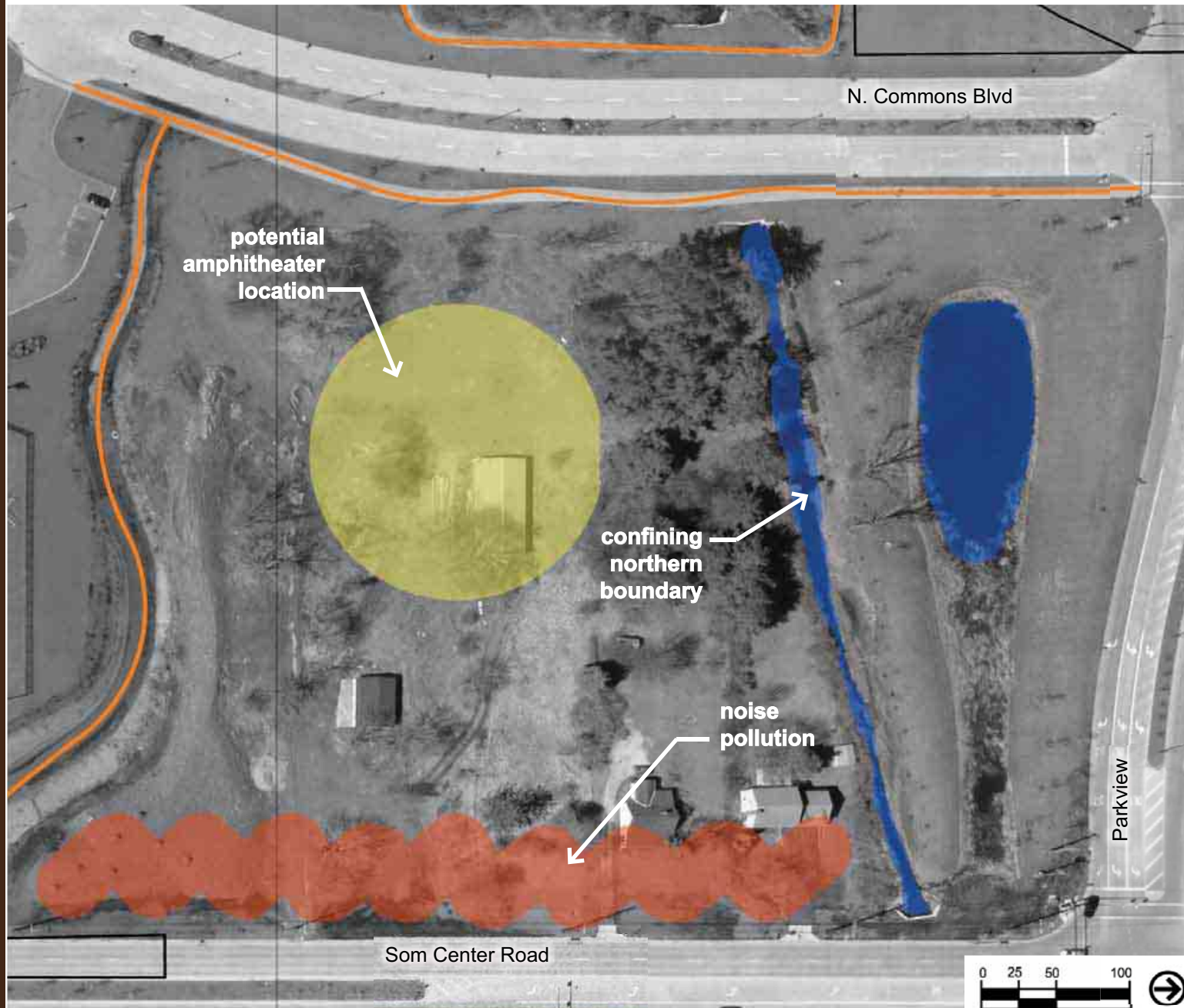
Constraints

- uneven grades make accessibility difficult
- not a lot of room- pinch point
- undesirable scenery
- drainage problems with being the low point for parking lot
- fence removal may be necessary



Grade transitions will be difficult for trail passage

Opportunities and Constraints Detail: Amphitheater



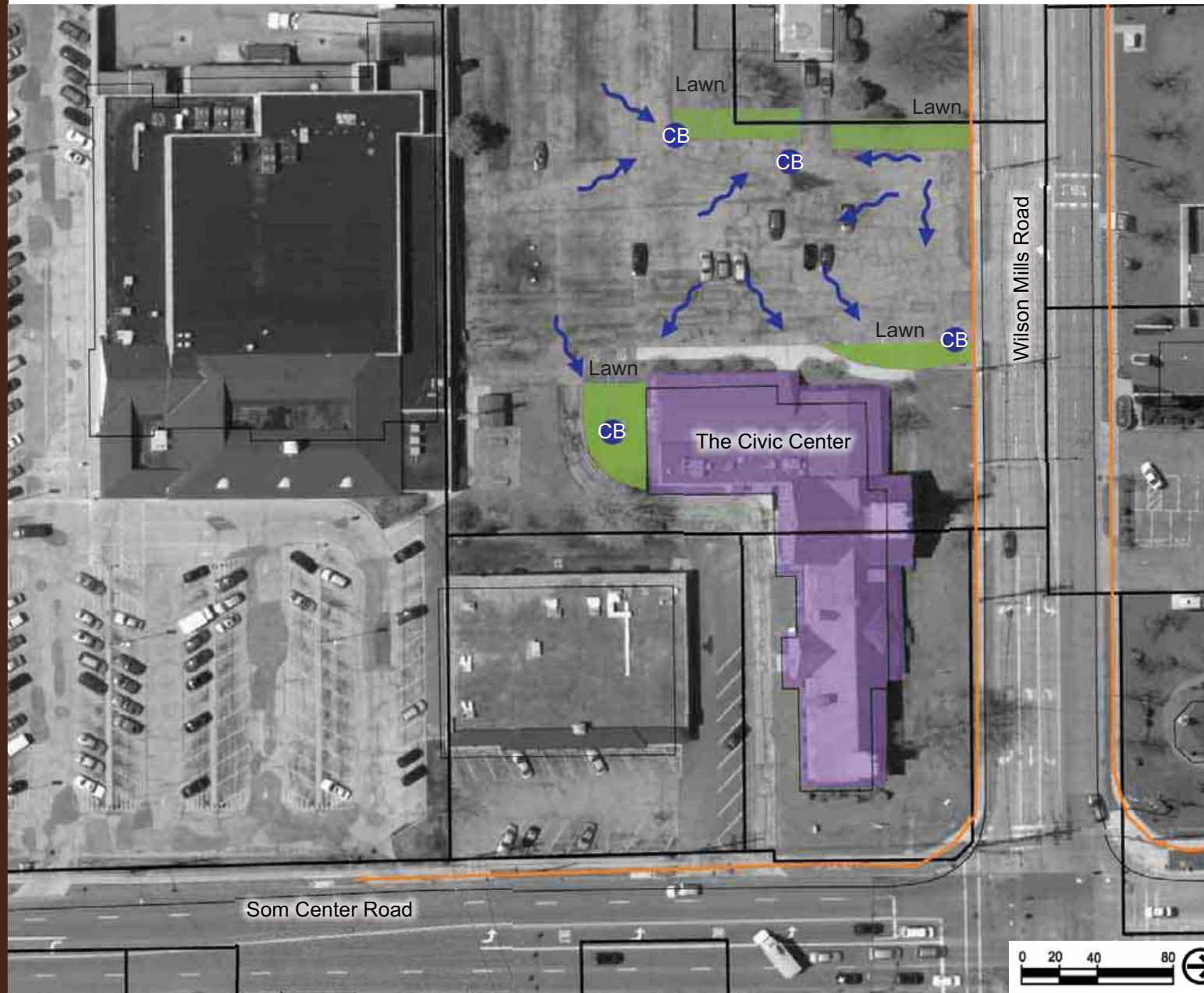
Opportunities

- access to existing pedestrian networks
- parking, and community facilities located around the site

Constraints

- noise from SR 91
- existing evergreen grove and drainage stream confine the site to the north

Opportunities and Constraints Detail: The Civic Center



Opportunities

- potential for highly visible project demonstrating runoff filtration
- take advantage of existing grades to capture runoff and remove particulates
- raingardens can be constructed in existing lawn and parking lot
- raingardens will enhance the landscaping of the Civic Center

Constraints

- portions of curbing would have to be removed for raingardens
- loss of parking spaces



The Civic Center has the potential for a highly visible raingarden demonstration



Safe Routes To School Analysis: Overview

The Mayfield Village Center Elementary School services 4 surrounding communities and the student population within the local neighborhoods consisting of:

- Over 400 students
- All students lie within a 2 mile radius of the school with the exception of a 3 mile distance from May Pine Farms.

The existing student walking conditions to reach Center Elementary School are:

- The majority of neighborhoods having sidewalks on both sides
- The exceptions (Hickory Hill, most of Thornapple Drive/Meadowood Dr., Glenview Rd/Bonnieview Rd, and Worton Park Dr/Joyce Rd) are low volume streets with minimal traffic especially during the hours of student commute.
- All students must cross or travel along at least one major roadway to get to school
- Existing underpasses at SOM Center Road provide safe crossing for students, but once across there is no trail system to reach the school

It has been recommended in order to attain the highest safety that:

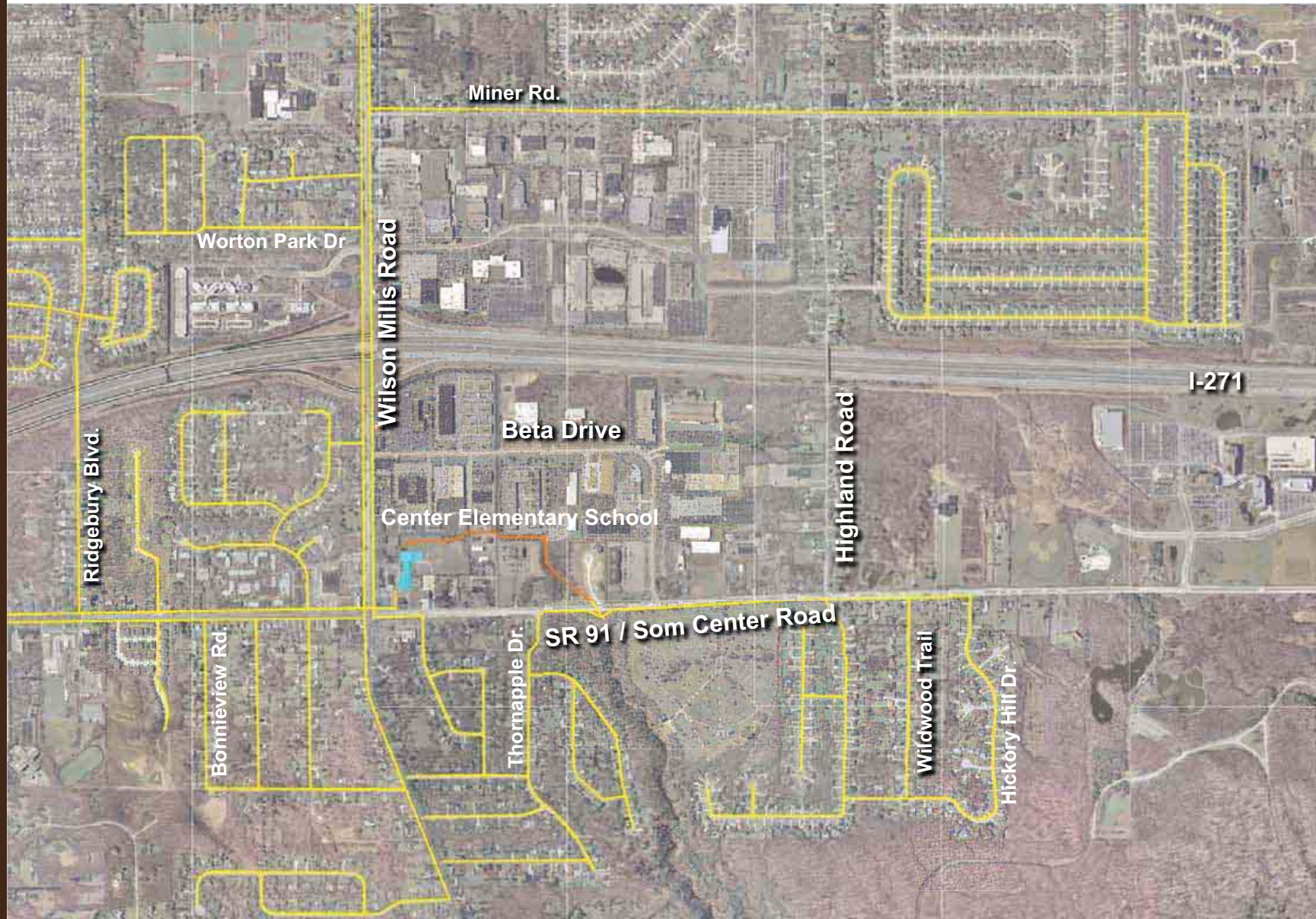
- A trail connection be made between the 2 existing underpasses and the school to provide safe, low volume travel.
- The only at-grade crossing of SOM Center Rd. take place at the Wilson Mills intersection in order to concentrate the largest amount of students for safe crossing.
- The only crossing of Wilson Mills Rd. should likewise include the highest amount of students possible, currently the SOM Center intersection is the most ideal.

Safe Routes to School Existing Facilities Plan



- Existing Sidewalk
- Existing Bikepath / Trail
- Existing Crosswalks

Safe Routes to School Recommended Travel Plan



- Recommended School Travel Routes
- Recommended Path Extension

Photographic Inventory



Looking north along SOM Center Rd. 4 lanes of traffic



Wilson Mills, SOM Center Intersection, high traffic concentration



Looking at the Civic Center along Wilson Mills



Potential trail pathway to school

Photographic Inventory



High visibility location for innovative Green Design at the Civic Center



Raingarden opportunity location utilizing existing lawn in front of the Civic Center



Existing parking lot slopes to lawn areas with existing catchbasin could be utilized for raingardens



A few parking spaces could potentially be removed for a parking lot raingarden

Photographic Inventory



Corner of ODOT property with fence, possible trail location



Beechers Brook from corner of ODOT property, steep grade



ODOT property displaying difficult grades



Opportunity for utilizing existing asphalt parking lot for trail

Photographic Inventory



Opportunity for overlook to take advantage of scenic cascade



Existing stream erosion zones are stream restoration opportunities



Existing SOM Center Rd. underpass



Existing asphalt trail and decorative wall along Cascade

Photographic Inventory



Existing gravel walking path



Existing boardwalk



Existing multi-purpose trail leading to underpass crossing Highland Rd.



Existing walking trail through a natural setting