





Project Partners

Masterplan Prepared for Mayfield Village

Bruce G. Rinker, Mayor
Diane Wolgamuth, Administrator
Ron Wynne, Finance Director
Douglas Metzger, Service Director
Ted Esborn, Executive Assistant for Planning & Development

with the advisory of Mayfield Village Council:

Bill Buckholtz, Ward 4, Council President
Thomas Marrie, At Large, Council President Pro Tem
Bill Marquardt, Ward 1
Lillian Mills, Ward 2
Stephan Parker, Ward 3
Joanne Cinco, At Large
Joe Saponaro, At Large

Mayfield Village Green Corridor Masterplan made possible by support from:



Transportation for Livable Communities Initiative (TLCI)
Planning Grant Program

Masterplan Prepared By URS Corporation
October 2009



Table of Contents

Introduction [p. 2 - 6](#)

Project Background
Context Map
Project Purpose and Need

Inventory and Analysis [p. 7 - 32](#)

Project Area Key Map
Ownership Maps, North & South Corridors
Land Use Maps, North & South Corridors
Natural Systems Maps, North & South Corridors
Pedestrian Network Maps, North & South Corridors
5 Minute Walk/Bike Ride Analysis
Overall Opportunities & Constraints
Detailed Opportunities & Constraints of Beecher's Brook
Detailed Opportunities & Constraints of Cascade Overlook
Detailed Opportunities & Constraints of Cascade Erosion
Detailed Opportunities & Constraints of ODOT Property
Detailed Opportunities & Constraints of Amphitheater
Detailed Opportunities & Constraints of The Civic Center
Safe Routes to School Analysis
Photographic Inventory

Alternatives Analysis [p. 33 - 53](#)

Conceptual Trail Plan
Proposed Trail Segment 'A' & 'B' Plans
ODOT/Panzica Ramp/Boardwalk Alternative
Trail Design Through Existing Parking Alternatives
Beechers Brook Bridges/Ramps Alternatives & Examples
Proposed Trail Segment 'C' & 'D' Plans
Existing and Proposed Trail Comparative Analysis
Trail Enhancements Alternatives
The Civic Center Bioinfiltration Potential Locations
Beechers Brook Erosion / Restoration Alternatives
Cascade Erosion Control and Slope Stabilization
Overlook Conceptual Plan & Examples
Outdoor Amphitheater Design Precedents
Outdoor Sculpture Walk Design Precedents

Mayfield Village Green Corridor Masterplan [p. 54 - 68](#)

Entire Trail System

Proposed Green Corridor Masterplan:

- Overall Proposed Trail Plan
- Segment A
- Segment B
- Segment C
- Segment D
- Segment E
- Segment F1
- Segment F2

Detailed Plans:

- The Civic Center Bioswales
- Beechers Brook Stream Restoration
- Cascade Overlook and Erosion Control
- Parking Lot Bioswales
- Amphitheater Design

Implementation [p. 68 - 79](#)

Phasing Plan
Grant Funding

Appendix [p. 80 - 85](#)

Appendix A: Trail Design Justification
Appendix B: Green Infrastructure & Sewer Fees
Appendix C: 2009 Preliminary Costs of Construction

- Overall
- Segment A
- Segment B
- Segment C
- Segment D
- Segment E
- Segment F1
- Segment F2



Project Background

Mayfield Village has in recent years experienced some of the most significant economic development in Cuyahoga County due to the construction of the Progressive Insurance campus at Parkview Drive. A new office campus has recently been proposed adjacent to the Progressive campus, and just north of Highland Road. These office campus and supplementary infrastructure developments have been carefully balanced with attention to maintaining the rural village character, addressing sustainability, and to meeting residents and employee recreational needs.

The project area contains all the core facilities of Mayfield Village:

- The Civic Center
- Center Elementary School
- Beta Business Park
- The Progressive Insurance Campus
- Several city parks and recreation facilities
- And borders Cleveland Metroparks North Chagrin Reservation

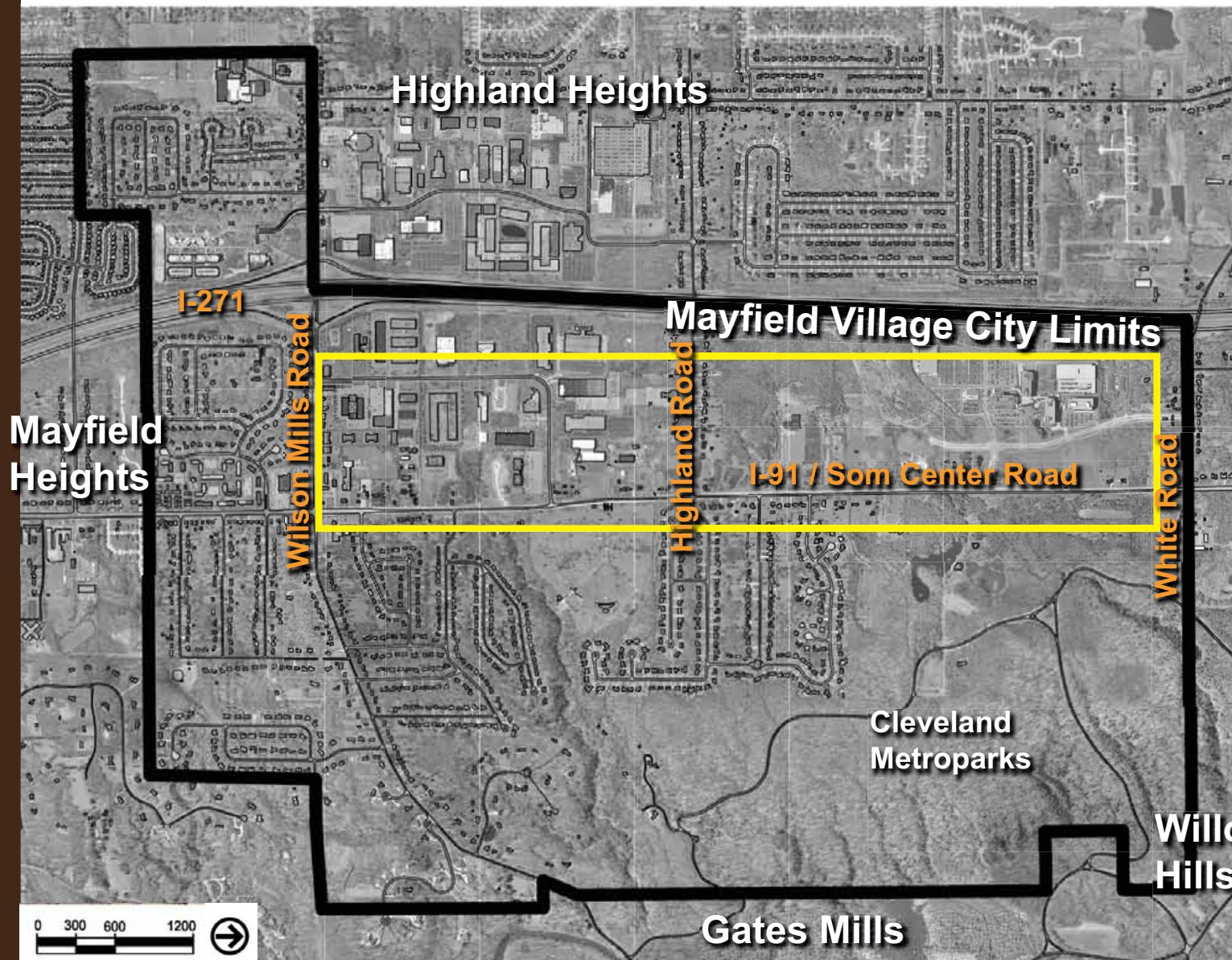
Existing trails along SR 91 collect Mayfield Village residents from the east side of the roadway and connect to two pedestrian underpasses. The north underpass connects to the Village Pool and the Progressive campus. The south underpass is not currently connected to any trails west of SR 91.

The Green Corridor will service:

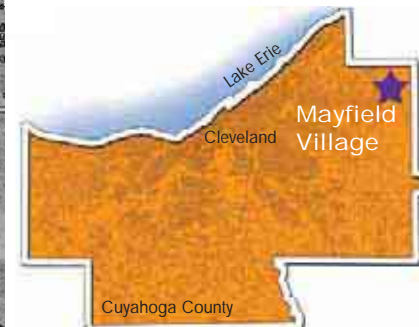
- Mayfield Village residential neighborhoods east of SR 91 containing approximately 2000 residents
- Center Elementary School consisting of over 400 students
- Beta Park housing approximately 1,000 jobs
- The recently constructed Progressive Insurance campus containing approximately 3,000 jobs
- The proposed Progressive campus envisioned as ultimately housing another 3,000 new jobs

Context Map

Mayfield Village is bordered by the communities of Mayfield Heights, Highland Heights, Willoughby Hills, and Gates Mills. Main roads intersecting the village are Wilson Mills, Highland, I-91/Som Center, White, and I-271.



Mayfield Village is located in Cleveland Ohio in the Northeast region of the state bordering Lake Erie.



Mayfield Village is on the east side of Cleveland, about 30 minutes from downtown.



Project Purpose and Need

The Mayfield Village Green Corridor Masterplan will develop a masterplan for a 2 mile greenway and trail which will:

- Enhance pedestrian and bicycle linkages
- Connect neighborhoods on the east side of SOM Center Road/SR 91 to schools, city parks, and major employment centers on the west side of SR 91
- Build upon major prior investments made in trails and underpasses under SR 91
- Provide a recreational amenity to Beta Park & Progressive Insurance employees

The Green Corridor Masterplan will also assess the feasibility of incorporating a variety of environmental measures including:

- Stream restoration potentials in the severely eroded Beecher's Brook corridor
- Public access enhancements to the scenic overlook view of the cascade at Beecher's Brook
- Interpretive signs to explain innovative environmental features
- Enhance public access to innovative wetland and stream restoration projects
- Stormwater best management practices such as porous pavements, bioswales, or raingardens within the corridor to reduce runoff to the Chagrin River